

COMMUNITY NEWS *FREE!*

Number
410

South Molton & District

APRIL 2015

01769 575528/572501 moltonnews@hotmail.co.uk

www.visitsouthmolton.co.uk/community-news

For local events and information please see inside →



Open Halls Month

A project nurtured by NDCVS, DCT (formerly CCD) and Hallshare organisations. Village Halls and Community

Centres throughout Devon are opening their doors to

the community. Committees are inviting you to support

them by attending one or more events throughout April.

This initiative aims to support Halls in the community,

and encourage participation and neighbourliness

by throwing open the doors of our diverse

buildings, showing the activities and

opportunities that go on inside.

In our area

Sat 11th-Filleigh VH is open 1.30-4.30 with craft activities (upholstery / felting / quilting / beading), and a short mat bowls 'try it and see' mat. Free cream teas.

Sat 11th (a popular day)-West Buckland VH open 2-5pm, village past pics, user group displays, table tennis, skittles and tea.

Mon 13th- Bishops Nympton VH-open 2.30-9pm- a beautiful new hall to take a look at and see what goes on inside.

Thurs 16th-South Molton Parish Church Hall (Duke St.)-10-12- free teas and coffees (a plus on Market Day!), plus user group info.

Sat 18th-Swimbridge- time tba-another lovely new hall- and they are very busy

Sat/Sun 18th/19th Chittlehamholt V H-an opportunity to join the decorating party

Sat 25th- Burrington-open 10-12.30-coffee morning, equipment and hall layouts just drop in on them.

Other halls in North Devon that also open include:- West Down (Weds 8th 8.30- 12.30), Lee (Sun 12th 2-5pm), Bratton Fleming (Sat 18th) and Instow (Sat morning 18th).

For those in wider Devon take a look at the Devon Communities Together (formerly CCD) website, and follow the Open Halls links- they include Wembworthy, Black Torrington, Iddesleigh, Broadwoodkelly etc.

For info about Hallshare in North Devon, contact t.hussell.filleigh@btinternet.com, and re DCT-their website or David Kinross, 01392 248919



MARKET
VETERINARY
CENTRE

Farm | Pets | Equine

**Now Open All Day
On Saturdays!**

Your Local
Independent
Veterinary Centre

SOUTH MOLTON
TEL: 01769 572176

www.marketvets.co.uk

RIVERSIDE CARAVAN AND CAMPING PARK

South Molton, North Devon

Camping For RV's, Caravans,
Motorhomes, Campervans, Tents
2015 Luxurious Statics
Specimen Carp Lakes
Children's Play Area

Opening For Easter
Bar Restaurant Entertainment

01769 579269

relax@Exmoorriverside.co.uk
www.exmoorriverside.co.uk

THE EXMOOR MOLECATCHER

Whether it's a few mole hills in the garden or hundreds in your fields

I CAN HELP

Friendly local service covering Exmoor and surrounding areas

**No Mole-
No Fee!**

Call Neil on

07855872143

or

01643 831513



www.exmoormolecatcher.co.uk

C. DENHAM

Est. 30 yrs

Painting • Carpentry • Building
Powerwashing • Drains
Chimney Sweep • Plumbing • Mini Digger

Mobile: 07779 475324

Home: 01398 324569



NIGHTWALK

A LADIES-ONLY MOONLIT WALK

Join us for Nightwalk on Saturday 16th May, walking with hundreds of other women in aid of North Devon Hospice. Sign up today and get your friends, colleagues and family to join you too. Register soon to take advantage of our early-bird registration fee of just £10 by visiting www.nightwalk.co.uk (or phone **01271 347232** for a form). Taking part in Nightwalk makes a real difference to your local Hospice. Join us for the biggest single fundraising event in N Devon/Cornwall border area. It is only with YOUR support that the Hospice can provide our specialist care to local people affected by cancer and life-limiting illnesses.

PUT A SPRING IN YOUR STEP.

Bish Nym Dance Club are hosting a Tea Dance on Sunday 12th April in the Parish Hall. This is a great opportunity to get some gentle exercise in a friendly atmosphere. There will be Ballroom, Latin, Sequence and fun dances so everyone can join in. Time 2- 5pm, with a break for the usual bring and share refreshments. Please ring **01769 550555** for more information.

An Exhibition of Illustrations of Haiku, will be held throughout April at the Amory Centre, S Molton. Maxine Bracher, the Artist, who is currently studying at the Petroc School of Art, Brannams, Barnstaple, will be in residence at the Amory Centre on April 23rd at 7.30pm; all are welcome.

Calling all cyclists!

Entries for this year's Velociraptor Cycle Challenge on Sunday 12th July are open. Check out N Devon Hospice's cracking new event website for route information, stop details, plus start/finish location. Enter at www.velociraptorcycle.org.uk!

Computer Repairs South Molton

Friendly & understandable assistance
Broadband set-up -- Internet advice - e-mail problems resolved -- Virus, trojans & others removed -- Networks --Data recovery
New Discs, CD/DVD writers, modems etc. installed at very competitive prices.

John Smallridge 01598 710252

The GROVE INN

A real taste of Devon®

Lunch Tuesday to Sunday ~ Dinner Tuesday to Saturday

Kings Nympton, North Devon EX37 9ST

Telephone: 01769 580 406

eatdrink@thegroveinn.co.uk ~ www.thegroveinn.co.uk



Anstey WI on Tuesday April 21st a

talk by Mr David Hicks, 'Hearing Dogs for the Deaf', at Oldways End Village Hall at 7pm Anstey WI meets on the 3rd Tuesday of every month at 7pm either at West Anstey or Oldways End Village Halls. New Members and guests are welcome to join us. Please contact Hazel Morgan **01398 341972** for a copy of our 2015 programme. Email tiz01@btinternet.com



SOUTH MOLTON VINTAGE RALLY CLUB

The Spring Tractor and Commercial Road Run will be held on 12th April, depart at 10am. Last year saw our first attempt at a combined run, with tractors and commercials, and we are planning likewise for this year. All vehicles will assemble at the Central Car Park, South Molton EX36 4BL. Tractors will follow a planned route including some off-roading, and commercials (other classic and vintage vehicles are very welcome to enter and join this cavalcade) will take a different, longer route with each group arriving at the planned lunch stop at Filleigh Village Hall at around 1pm. For information, entry forms and to book your roast beef lunch, please ring **01271 850903** or **0794 026060**.

Rascal Records Vinyl Sales

This Month's Top 20

- 1 (1).....The Beatles
- 2 (3).....David Bowie
- 3 (4).....Queen
- 4 (-).....Now (Various)
- 5 (5).....Abba
- 6 (16).....Duran Duran
- 7 (18).....Dire Straits
- 8 (13).....Wings
- 9 (-).....Elvis
- 10 (11).....Simon & Garfunkel
- 11 (6).....The Who
- 12 (15).....Black Sabbath
- 13 (20).....Sex Pistols
- 14 (7).....Rod Stewart
- 15 (17).....Elton John
- 16 (8).....Status Quo
- 17 (10).....Rolling Stones
- 18 (2).....Led Zeppelin
- 19 (12).....Iron Maiden
- 20 (-).....Madness

Last months position in (brackets)

Rascal Records

Every Thursday
from 5th March
8am-1pm

South Molton
Pannier Market

Sell your LP Records

Bring along your vinyl to sell or browse for turntables, music books & records of rock and roll, chart, soul, metal, punk and jazz

The Lynton & Barnstaple Railway



www.lynton-rail.co.uk

at Woody Bay Station on the A39 (EX31 4RA) between Blackmoor Gate and Lynton Under 5's travel free! Pay once - ride all **01598 763487**



Snapdragon Antiques Pine and Country Furniture

80, South Street, South Molton, Devon
Old and interesting items bought and sold
House Clearance Service Available
Telephone 01769 572374 or 580763 evenings

Grand Western Canal Photo competition 2015

Budding photographers are encouraged to capture the beauty of the Grand Western Canal for a special competition this year. There's £350 worth of photography vouchers up for grabs, plus the chance of the pictures appearing on the website and facebook pages. Closing date 30 November, winners will be announced in December. For details go to www.devon.gov.uk/gwcpphotos

Chulmleigh Tennis Club

Our LTA registered club organizes coaching for all ages including mini tennis, junior, adult beginners and improvers. There are social play sessions on Sunday from 10am until noon throughout the year and a friendly club tournament during the summer season. Facilities include three floodlit courts at Chulmleigh Academy Sports Centre, EX18 7AA. For details of the new season's tournaments, coaching, League games, taster sessions and coffee mornings, visit www.chulmleightennisclub.co.uk or contact the membership secretary on **01363 83279** or email chulmleightennisclub@hotmail.co.uk

Ferret Race

Fun for all the Family at North Molton Sports Hall in aid of North Molton Primary School on 17th April. First race at 7pm, entry £3 per person, includes hot dog. Bar * Tote * Draw. For anymore information please ring Kate Kellaway **01598 740264** or Debbie Tapp on **01598 740492**

Stuart's Quirky Quotes

"The jury, passing on the prisoner's life, may, in the sworn twelve, have a thief or two guiltier than them they try."

Shakespeare 'Measure for Measure'.

"I love acting. It is so much more real than life".

Oscar Wilde.



National Plant Monitoring Scheme

Every Flower Counts

Volunteers Needed For Annual Stock-take of Wildflowers -The new National Plant Monitoring Scheme (NPMS), from spring 2015, will for the first time enable scientists to take an annual stock take of the UK's wild plants and their habitats, but to do this we need the public's help. We are looking for volunteers to carry out surveys of wildflowers and their habitats that will provide robust evidence of which widespread plants are increasing or declining, as well as indicating the changing state of our most valued habitats such as grassland, fenland and even road verges. Plants are nature's building blocks and this new monitoring scheme will sit alongside existing schemes for the UK's birds and butterflies to help us understand more about how the countryside is changing.

For more information on the NPMS and how to take part please visit www.npms.org.uk



Public transport review

To help meet the £50 million budget reduction required by Government spending cuts next year, Devon County Council now face making savings of £1.7m from our public transport budget. It will be the first time that we have proposed making service reductions for four years. Most bus services in Devon are run commercially by bus companies however, we spend £5.376m pa to support nearly 200 bus services, carrying around 4.5m passengers. These services would not run without this support. We also manage the National Bus Pass Scheme for 175,000 pass holders which costs us more than £9m pa. We need your help - what do you think about our proposals to reduce services? This consultation closes on **20th April**. <http://new.devon.gov.uk/publictransportbudget/>

Tiverton Art Society Spring Exhibition

Castle Primary, Tiverton EX16 6QR



10.30am - 6pm daily

April 4th - 11th

West Buckland

NURSERY

A great start for children aged 3+
Swimming, music, dance, drama, sport, art, outdoor play

Tel: **01598 760629**

www.westbuckland.devon.sch.uk/nursery

Kings Nympton Parish Hall

SATURDAY 18TH APRIL 8PM

HUALA HONAN

Amazing soulful voice—talented songwriter

IN ASSOC. WITH BEAFORD ARTS - BAR FROM 7PM

TICKETS £7.50 Adults U16 £5 Family £22

Homemade Pasty & Pud option must be booked + £7.50

lowersletchcott@hotmail.co.uk 01769 572414

See Parish hall pages & much more on

www.kingsnympton.org.uk

Registered charity no. 1113712

MUSIC



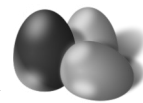
APRIL

All month: Illustrations of Haiku, Maxine Bracher, exhibition, Amory Centre, S Molton

- 1 **Rural Outreach advice service**, Encompass SW, Primary School, N Molton, 10am-12noon appointments 07817 991631
- Coffee morning**, Methodist Schoolroom, Brayford, 10.30-12
- S Molton Volunteer Bureau**, Amory Ctre, 2-4pm 01769 573167
- Capitol development** exhibition, Smith Gore, Parish Hall, Bishops Nympton, 3-7pm
- Duplicate Bridge**, beginners, George, S Molton, 7-10pm
- Short Mat Bowls**, Parish Hall, Bishops Nympton, 7.30pm 07772 757124 and every Wednesday
- Easter Concert**, Parish Church, Witheridge, 7pm 01884 860132
- 2 Collection for **N Devon Hospice**, Mole Valley Fmrs, S Molton
- Country Market, Pannier Mkt, S Molton** 7.30-12 & every Thur
- N Devon Voluntary Services**, Amory Centre, S Molton 10-1pm 01271 866300 and every Thursday
- Rural Outreach advice service**, Encompass SW, Amory Centre, S Molton, 10am-3pm appts 07817 991631 and every Thursday
- Citizens Advice Bureau**, Amory Centre, S Molton appointments **03444 111444** and every Thursday
- Plough & Share Credit Union**, Amory Centre, S Molton, 10-12noon & every Thursday
- Computer drop-in**, S Molton Library, 10am-12 and every Thurs
- Old Tyme and Sequence Dance Club**, Parish Church Hall, S Molton, 7.30-9.30pm 01769 579249
- Hedgehog Preservation**, Exmoor Soc, Congregational Hall, Dulverton, 7.30pm 01398 323954
- 3-5 **Family Fun** with Jason Toft, Riverside Caravan Park, S Molton, book 01769 579269
- 3 **Good Friday**
- Carrying the Cross up Honda**, from Parish Church, Swimbridge, 7.30am
- S Molton Foodbank**, 10.30am-1.30pm 07542 184276/07874 206438 and every Friday
- Walk of Witness**, N Molton Bridge, 10.30 - Methodist Chapel, 12
- Walk of Witness**, Knowstone Church to Moor, 11.30
- Taizé Passion Service**, Parish Church, High Bray, 7pm
- Concert**, S Molton Circuit Choir, Wembworthy Chapel, 7.30pm
- Bingo**, Parish Hall, Burrington, 8pm
- 4-11 **Spring Exhibition**, Tiverton Art Soc, Castel Primary, 10.30-6
- 4 **Wildlife Day**, Pannier Market S Molton 8am-1pm
- Sat Storytime**, S Molton Library 10.30 01769 572128 & every Sat
- Coffee morning**, Methodist Chapel, Chittlehampton, 10.30-12.30
- Have a go Archery**, Exmoor Archers, N Molton Sports Club, 12-2pm 01598 710598/01769 5672506
- First Saturday Acoustic**, George, S Molton, 8pm 01769 572514
- Easter Vigil**, Parish Church, N Molton, 8pm
- 5-10 **Trio of Local Artists**, exhibition, Heritage Centre, Dulverton, 07969 243887



LOGAL



- 5 **Easter Day**
- Exmoor Pony Centre open day**, 11am-3pm
- Sunrise service**, Froude Stone, Exmoor, 6.30am
- Easter Fun Day**, Lynton/Barnstaple Rwy, Woody Bay Station
- Easter Egg Hunt**, Parish Church, High Bray, 3pm
- Car Boot Sale**, S Molton Infants PTA, Pannier Market, sellers, 8am, buyers 9am-12noon, 01760 573103
- 6 **Easter Monday**
- Engines in steam**, Coldharbour Mill, Uffculme, 11-4pm
- Easter Bunny Hunt**, Castle Hill, Filleigh, 11am-4pm
- Dance** for Hall Funds, Village Hall, Knowstone, 8pm (Ben)
- 7 **U3A rambles walk**, meet Central Car Park, S Molton, 9.45am 01769 573558 5 miles
- Rural Gateway advice service**, Encompass SW, Amory Centre, S Molton, 10am-1pm appts 07817 991631 and every Tuesday
- Yoga**, Parish Hall, Bishops Nympton, 10.15-11.45am 01884 253229 and every Tuesday
- S Molton Hearing Loss Gp**, Age Concern 2-4pm 01271 373236
- Bounce & Rhyme**, S Molton Library, 10.30am and every Tue
- Hearing Loss Support Group**, See Hear Centre, Age Concern Pop-In South Molton, 2-4pm 01271 373236
- Meditation**, Simon Millward, Rose and Crown, S Molton, 6.30pm 01769 579829 and every Tuesday
- Bishops Nympton Dance Club**, Parish Hall, Beginners, 6.30pm, Club, 7.30pm 01769 550555 and every Tuesday
- 8-10 **Easter workshop**, Razzle Dazzle Performers, Town Hall, Chulmleigh, 12-4pm 07789 225288
- 8 **Rural Gateway advice service**, Youth Centre, Chulmleigh, 10am-1pm appointments 07817 991631
- Chess Club**, George, S Molton, 7pm
- Practice Dancing**, W Anstey Parish Hall, Yeo Mill, 8pm
- 9 **Memory Café**, Amory Centre, S Molton 10.30am-12.30pm memory.cafe@northdevoncab.org.uk
- Town Tour**, from Dulverton Heritage Ctre, 4pm 07969 243887
- S Molton Twinning Ass**, George, S Molton, 7.30 01769 573558
- 10 **Job seeking advice**, S Molton Library, 10am-4pm
- Stitching Group**, S Molton Library, 4-5.30 & every Friday
- Creatures of the Night**, film, AGM, **Devon Wildlife Trust**, Castle Centre, Barnstaple, 7 for 7.30pm
- Spring Show**, Bishops Nympton Gardening Cl, Parish Hall, 7.30
- Imitation Game**, **Rural Cinema**, Pavilion, Chulmleigh, 7.30pm 01769 580005
- S Molton Deanery Quiz** final Parish Hall, Chittlehamholt, 7.30
- Quiz and Carvery** for W Anstey Church, Sportsman's Inn, Sandyway, 7 for 7.30pm 01398 341444
- 11 **Pannier Market** S Molton 8am-1.30pm and every Saturday
- Sat Coffee morning/Easter egg hunt**, Parish Church, Bishops Nympton, 10am-12noon
- S Molton Town, N Devon and Devon County Councillors' **surgery**, Amory Centre, S Molton, 10-11am
- Farmers' Market**, Village Hall, Brayford, 11am-1pm
- Food Smoking Day**, Bulkworthy Project, Rackenford 07594 569441
- Living History Day**, Wimbleball Lake, 01398 371460
- Hallshare open days**, Village Hall, Filleigh, 1.30-4.30pm; Village Hall, W Buckland, 2-5pm

DESPICABLE ME  **Razzle Dazzle Performers**

SINGING EASTER WORKSHOP

8th, 9th & 10th April 2015
12.00pm - 4.00pm **DANCE**
Chulmleigh Town Hall (Upstairs)
£40.00 for the 3 days!
4 - 7 years **DRAMA**

Performance on the last day to
FACE PAINTING family & friends!
TAKING BOOKINGS NOW!!

To book a space please contact Justeen on:
M| 07789 225288
E| razzledazzleperformers@yahoo.com
W| www.razzle-dazzle-performers.co.uk

JOHN WALKER & CO INSURANCE BROKERS

**THE FAMILY BUSINESS SERVING
SOUTH MOLTON OVER 30 YEARS**

01769 572742

EVENTS

- S Molton RFC v Bodmin**, 3pm
Meshaw Young Farmers 70th anniversary dinner dance, High Bullen Hotel, Chittlehamholt
- 12 Plant Fair**, Plant Heritage, Pannier Market, S Molton, 10am-3pm 01769 540528
Tractor and Commercial Run, S Molton Vintage Rally Club from Central Car Park, 10am 01271 850903/0794 026060
Roast Lunch for Rose Ash Church, Parish Hall book 01769 550409 by 6th April
Point to Point races, Eggesford Hunt. Upcott Cross
Tea Dance, Bishops Nympton Dance Club, Parish Hall, 2-5pm 01769 550555
 Mr Turner (12A), **S Molton Film Soc**, George, 8pm 01769 572449
- 13 Beginning of School Term**
Hallshare open day, Parish Hall, Bishops Nympton, 2.30-9pm
Short Mat Bowls, Parish Hall, Bishops Nympton, 2.30pm and every Monday
Amnesty International meeting at the George 7.30pm
- 14 Parent and Toddler Group**, 9-11am; then **coffee and company**, Parish Hall, Kingsnympton, and every Tuesday
Council meetings, Town Hall, 6.30pm
 Excavations at Batsworthy Windfarms, **N Devon Archaeological Soc**, Castle Centre, Barnstaple, 7.30pm
- 15 Deadline for items for May's Community News**
Volunteer Day, Blackerton Ecocentre, E Anstey 01598 341963
Rural Gateway advice service, Primary School, N Molton, 10am-12noon appointments 07817 991631
Hallshare open day, Parish Hall, Kingsnympton, 8-10pm
Duplicate Bridge, beginners, George, S Molton, 7-10pm
Country Houses of Devon, H Mellor, Friends of Swimbridge Church, 7 for 7.30pm
Kingsnympton Badminton Club, Parish Hall, 7.30-10pm and every Wednesday
 Jubilee Sailing Trust, **Filleigh WI**, Village Hall, 7.30pm 01598 760332
- 16 Hallshare open day**, Church Hall, S Molton, 10-12noon
See Hear on Wheels, Community Centre, High Bickington, , 10-11.30am; Southley Road, S Molton, 2-4pm 01271 373236
Our Starry Skies, Heritage Ctre, Dulverton, 4pm 07969 243887
Nuala Honan, concert, supper, W Anstey Parish Hall, Yeo Mill, 6.45 for 7.30pm 01398 341615 *Beaford Arts*
Almost Heaven, Multistory theatre, Village Hall, Umberleigh, 7.30pm 01769 540276/644 *Beaford Arts*
- 17 Rural Gateway advice service**, Community Hospital, S Molton, 10am-1pm appointments 07817 991631
Quiz and Carvery, for Brayford Village Hall., Sportsman's Inn, Sandyway, 7 for 7.30pm 01598 740541/01643 831109
Ferret Racing for N Molton Primary School, N Molton Sports Hall, 7pm 01598 740264/492
Shake a Leg, concert, Parish Church, Chittlehampton, 7.30pm
Nuala Honan, concert, buffet, Parish Hall, W Buckland, 7.30pm 01271 863093 *Beaford Arts*
- 18-19 Hallshare open days**, Parish Hall, Chittlehamholt
18 Farmers Market, Old School, N Molton, 10am-2pm
Hallshare open day, Parish Hall, Swimbridge
S Molton RFC v Exeter Saracens, 3pm
Dance for Hall Funds, Village Hall, Knowstone, 8pm (Elaine)

SOUTH MOLTON TAXIS



Day & Night Services
8-16,33
Seater Buses available

Dominick's Close, Parsonage Lane, South Molton

01769 573636

- Nuala Honan**, concert, food, Parish Hall, Kingsnympton, 7 for 8pm book by 11th 017689 572414 *Beaford Arts*
- 19 Antique Market**, Pannier Market, S Molton, 10am-4pm
Youth Service, S Molton Methodist Church, S Molton, 5.30pm
- 20 Sawmill Open Day**, Simonsbath, 10am-4pm 01643 831202
Friends of S Molton Church AGM, 7; My favourite things, 7.30pm Church Hall 01769 573558
 Merchants of Tiverton, **Chulmleigh Local History Soc**, Pavilion, 7.30pm 01769 520677
- 21 Renewable Energy marketplace**, West Point, Exeter, 10am-4pm
Hearing Dogs for the Deaf, **Anstey WI**, Oldways End Hall, 7pm 01398 341972
 Jack Russell, **N Molton Local History Soc**, Old School, 7.30pm
 Triggers 3, **Bishops Nympton WI**, Parish Hall, 7.30pm
- 22 Chess Club**, George, S Molton, 7pm
 US Army training at Braunton Burrows, **Filleigh Local History Club**, Village Hall, 7.30pm 01598 760332
 Gardening for Wildlife, **Knowstone Garden Cl**, Village Hall, 8
Practise Dancing, W Anstey Parish Hall, Yeo Mill, 8pm
- 23 Coffee morning**, Cancer Res, Assembly Rms, S Molton, 10-12
See Hear on Wheels, Witheridge Sq, 11.30-1.30 01271 373236
Citizen/Junior Citizen of the Year, S Molton Rotary, Assembly Rooms, 7pm tickets Rotary Shop or 01769 573337
Maxine Bracher artist in residence, Amory Ctre, S Molton 7.30
- 24 Quiz and Carvery** for N Molton Church, Sportsman's Inn, Sandyway, 7 for 7.30pm
 Ian Griffin from Swansea **S Molton Organ & Keyboard Club**, Methodist Hall, S Molton, 7.30pm 01769 574677
Bingo, Bishops Nympton School PTA, 7.30pm
- 25 Volunteer Day**, Blackerton Ecocentre, E Anstey 01598 341963
Hallshare open day, Parish Hall, Burrington, 10am-12.30pm
Social night, parish Hall, Bishops Nympton
- 26 S Molton Flea Market**, Pannier Market, 10a3pm 07989 619745
Guided Walk through Bulkworthy woods, Rackenford, 11am lunch, book 07594 569441
 Your New Orchard, **Orchards Live**, Cobbaton 01884 861181
Messy Church, Methodist Church, N Molton, 4pm
Coolstuff, Methodist Church, S Molton, 4pm
- 27 N Molton Old School Rm Management Committee AGM**, 7.30
28 S Molton Town Council meetings, Town Hall, 6.30pm
30 Paddington, film, Village Hall, Knowstone 01398 341977

MAY

- 1 Quiz and Carvery** for N Devon Hospice, Sportsman's Inn, Sandyway, 7 for 7.30pm 01598 740541/01643 831109
- 2-3 Exmoor Landscapes**, R Blackmore, Old School, N Molton, 10am-5pm
- 3 Car Boot Sale**, S Molton Infants PTA, Pannier Market, sellers, 8am, buyers 9am-12noon, 01760 573103
- Point to Point races**, Devon and Somerset Staghounds, Holnicote

BISHOPS NYMPTON PARISH HALL

For your parties, dances, dinners, shows, weddings, meetings, courses, conferences, exhibitions, coffee mornings, whist drives, bingos.....
 Parking for 100 cars Free WiFi
 For information and bookings please call 01769 550313 or check out our website www.bishopsnymptonparishhall.org.uk



South Molton Tourist Information

'Not Just for Tourists'



Devon County Show Tickets Now On Sale

Ticket Prices start from £17.50 for an adult

This year the earlier you buy the more you save so call in and see us soon.

Lundy Island Sailing, National Express, Airport Hotels and the Eden Project are all bookable through us. It costs you no more and brings in vital funds for us.



Keep up to date with all our latest news and events. Follow **South Molton Tourist Information Centre** on Facebook

Tel: 01769 574122 — www.visitsouthmolton.co.uk

Open Mon & Thu 9.30-4, Tue/Fri/Sat 10-4, Wed 10-2

LET'S GO DANCING

Professional tuition in

Ballroom, Latin and Sequence Dancing

Every **TUESDAY** at Bishops Nympton Parish Hall
Beginners 6.30-7.30pm; Dance Club 7.30-9.45pm

Why not come and learn some new dance steps in
a warm and friendly social atmosphere

For more information please ring 01769 550555

Exmoor Pony Centre

Ashwick, Dulverton TA22 9QE

Our Easter Open Day is on Sunday 5th April from 11am-3pm. Join in an Easter Egg Hunt, meet the ponies, enjoy refreshments, crafts and for over 4's, pony rides. There is also a chance to meet an Exmoor Pony at South Molton Wildlife Day on Saturday 4th April between 9am-1pm. Please look at our website www.exmoorponycentre.org.uk for further details about future events and more about the work we do to preserve and promote these wonderful ponies; please support us.

Car Boot

The PTA Events Committee of South Molton Community Infants School are holding a car boot sale on Sunday 5th April in the Pannier Market, 9am-12pm. £6 per pitch. Sellers can arrive from 8am and strictly no buyers until 9am! These are regular car boot sales held on the first Sunday in each month. For more info please contact Debbie Quick on **01769 573103** (next sale 17th May)

Seafood Festival

Welcome to North Devon Hospice's first 'Seafood Festival' at Barnstaple Pannier Market on Sunday 5th April. Entry is free but we actively encourage you to use this last chance to purchase those all-important 'Eating Out Experience Raffle Tickets' – as the draw will take place at 2.30pm that day! One lucky person will win the opportunity to eat out at some of North Devon's best-loved establishments once a week for a whole year for free and with a guest! Tickets are just £1.

Producers and exhibitors at The Seafood Festival will be cooking with locally caught fish and promoting local fish and sustainability.



South Molton Volunteer Bureau

Volunteer drivers wanted to take patients to medical appointments. Mainly to hospitals in N. Devon & Exeter. Expenses of .45p per mile can be claimed. This is a highly regarded & rewarding voluntary service.

For details phone 01769 573167 to leave a message or 01769 572584

NEWS

Flea Market

Sunday 26th April sees the second South Molton Flea Market of 2015. It takes place in the Pannier Market from 10am-3pm with free admission and parking!

The Market café will be there, along with Jack Chilli, Jakes Bakes, Vanessa's cakes and more! Music, face painting, Bouncy Castle, and a wide selection of stalls, crafts, kitchendalia, gardenalia, clothes, vintage, collectables, furniture. There are in excess of 50 stalls so you need to come and experience the atmosphere!

Further information from Rosemary **07989 619745**/r.h2hallett@btinternet.com



Citizen of the Year

The Rotary Club of South Molton are once again hosting the Citizen of the Year Award and Junior Citizen of the Year Award at the Assembly Rooms in South Molton on Thursday 23rd April at 7pm. There is also an Auction of Pledges, which will give you the opportunity to bid for some special events and many other lots, so come along, have a great evening and raise some money for charity.

Tickets at £7 for adults (£8 on the door), £3 for under 14's (£4 on the door), are available from the Rotary Shop or Wally on **01769 573337** and include a light supper. A bar will be available.

South Molton District Children's Centre

announces the long awaited return of Let's Cook. Action for Children will be working alongside the WI to bring you this wonderful course teaching how to source, cook and enjoy your food in a healthy, affordable way with your family. We hope to start at the end of April; there will be a crèche with limited spaces. Please call Louise on **01769 579615/ 07912395214** to book.

Young Parents - S Molton & Chulmleigh Children's Centres are setting up a series of six workshops. We will cover lots of issues in these workshops and would love to hear your ideas. We have had one young parent that would like to have a beauty session making homemade face packs...we think this is a wonderful idea and will endeavour to make it happen. What would you like to do? Please get in touch with on **01769 579615/07912395214**.

The Poltimore Inn



Real Ales & Fine Wines
Locally sourced products
Pool Table
Skittles

Visit our website or Facebook page for menus & events

East Street
North Molton
Devon
EX36 3HR

Tel: 01598 740338

www.thepoltimoreinnnorthmolton.co.uk



www. pannierantiques.com

Market Dates 2015
South Molton Pannier Market

10am to 4pm February to November

Sunday 19th April
Sunday 17th May
Sunday 21st June (focus on Ceramics)
Sunday 19th July
Sunday 16th August
Sunday 20th September (focus on Fabrics)
Sunday 18th October
Sunday 15th November
Sunday 13th December (Christmas Special)

Visit www. panniermarketantiques.com to buy and sell antiques



Exmoor is home to fantastic wildlife now you can get to see more of it.

Exmoor Wild Watch is an opportunity for you to join us in finding out more about some of the species characteristic of Exmoor. We would love to hear if you see any of the specific species listed on the website. Some are nationally rare, others we simply do not know enough about. You may want to take part in our many family friendly events or to get involved in an Exmoor Wild Watch training event. These include one off Discovery sessions to longer term surveys. Pick up a spotter's guide and family wildlife leaflet from any National Park Centre. It's easy submit your sightings, www.exmoor-nationalpark.gov.uk/environment/wildwatch-2015. When out looking for wildlife please follow the Countryside Code at all times.

ALAS POOR JOHNNY

published at last – 50 years on !!!

Alas Poor Johnny, Buster Johnson's book about farming on Exmoor in the 1950s, is finally being published! Told with a strong sense of drama, it is a vivid and fascinating account of life at West Nethercote, the remote farm on the outskirts of Winsford to which she moved with her husband Johnny and their young family in 1951. Cut off from the world she used to know, of domestic servants and bridge parties, she throws herself into her new life. It becomes filled by Johnny and the children, by the animals, and by a small but strong supporting cast of friends and neighbours, among them Mrs Stevens at East Nethercote, Tom Gage and Alby the rabbit catcher.

Buster died in 1987, without ever publishing her book. Her daughter Birdie has now done so on her behalf.

Alas Poor Johnny Paperback £7.99 and ebook
For more information go to www.troubador.co.uk/shop
Widely available and via Troubador (special offer)



Carole Bament
35 years experience
Small Business Accountant
Accounts - Tax Returns - VAT
Book-keeping

Specialising in the agricultural industry

1 Duke Street, South Molton, EX36 3AL

Above Webbers, Estate Agents in the Square

Tel: 01769 579065: 07899 916923

email: carole.bament@btconnect.com

Plastic pots, tubs and trays to be collected

North Devon's recycling service is being enhanced to enable local residents to put out more plastics in their weekly kerbside collections. From Monday 30th March, North Devon Council will be able to collect mixed plastics, such as yoghurt pots, margarine tubs and plastic food trays. This is in addition to plastic bottles and other recyclables that already go in the recycling boxes. A full guide is also available at www.northdevon.gov.uk/wasteandrecycling.



More targeted litter blitzes along the link road

The annual litter blitz along the North Devon Link Road is to become a thing of the past, with more targeted clean-ups from now on. North Devon District Council has invested in the relevant safety equipment, signs and training, to enable its own teams to carry out litter blitzes by themselves, as and when required.

To help minimise waste building up along the road, motorists are being urged to take their rubbish home and recycle it where possible, or to use the lay-by bins provided. If caught dropping litter, drivers can be fined up to £2,500 and even face court. There are also heavier fines for larger amounts of fly-tipping. To report fly-tipping, go to northdevon.gov.uk or phone 01271 374776.



Good-bye

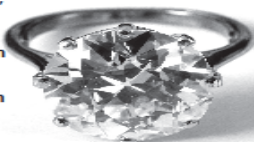
We wish a fond farewell to South Molton Town Clerk, Malcolm Gingell. He has been a good friend to the Community News for many years and we all wish him well for the future.

North Devon Council is moving from the Civic Centre to Lynton House this month!

gth

Greenslade Taylor Hunt

- Monthly Antique Sales including furniture, ceramics, glassware, silver, jewellery, paintings and collectables.
- Free Valuation Mornings every Monday 9 am – 1 pm at the Saleroom
- Free Home Visits
- Monthly Sales at Sedgemoor Auction Centre of house clearances, modern furniture and effects
- Valuations for Insurance, Probate and Family Division Purposes



The Octagon Salerooms, East Reach, Taunton, Somerset, TA1 3HL
T: 01823 332525 E: antiques.saleroom@gth.net
www.gth.net



**SOUTH MOLTON
TOWN COUNCIL**

**SOUTH MOLTON
PANNIER MARKET**

Every THURSDAY & SATURDAY
from 7.30am

01769 572501 01769 572252

Serving the local community for over 200 years
For all your legal requirements

- Personal Injury Claims
- Disputes and Litigation
- Debt Collection
- Court Representation
- Divorce & Family matters
- Landlord & Tenant
- Conveyancing
- Trusts, Wills & Probate
- Business Advice and Contract matters

7 East Street, South Molton

Tel: 01769 572157

Woodford House, Fore Street, Chulmleigh, EX18 7BR

(Tuesdays 9.30am - 12.30pm)

www.crossewyatt-solicitors.co.uk

Final chance to help shape the future

For the last time local residents can have their say on the future of Northern Devon in a consultation on the recently approved main changes to the Local Plan for North Devon and Torridge. The Plan shows what development the area needs up to 2031 and where it might be located. It will be the main document used to make decisions on planning applications. The main changes to the document will help to make sure it is found 'sound' and now balances the right level of housing to meet the proposed amount of new employment. To do this there has been:

- a reduction in the amount of employment land from 110 to 85 hectares as latest evidence suggests demand to be less than previously thought.
- an increase in the number of new homes to be provided from 16,500 to 17,220 by including more homes on sites that have been identified previously – no more sites have been added
- The level of provision of affordable homes has also been amended, following recent changes to government policy.

Once this last consultation exercise is complete, we will submit the Plan to the Secretary of State for examination later in the year and hopefully adoption, in spring 2016. Finally we will be in a strong position to ensure that all development is plan led and not developer led.

The consultation will run until Friday 1 May. Local residents can have their say online at <http://consult.torridge.gov.uk/portal/planning/localplan/> Paper copies of the plan can also be viewed at the Councils' offices, libraries and Parish Council offices.

125 East St, South Molton EX36 3BU
9am-5pm Monday-Friday 01769 572501

- Citizens Advice Bureau** 03444 111444
Thursday, by appointment only 01769 572501
- Community News S Molton & District** 01769 575528
- Councillors surgery**
- 2nd Saturday 10am-11am 01769 572501
- Rural Outreach Advice Service** from Encompass SW
- Tuesday 10am -1pm 07817 991631
- Thursday 10am - 2pm
- Appointments recommended
- Library** 01769 572128
- Tuesday 9am-5pm
- Wednesday 9am-1pm
- Thursday 9am-5pm
- Friday 9am-6pm
- Saturday 9am-1pm
- Member of Parliament Surgery** 01271 328631
Alternate months, by appointment
- Memory Café** for those with memory problems
- 2nd Thursday 11am-1pm 01271 311630
- North Devon Council Customer Advice**
- Mon, Wed, Thurs 9am-5pm 01769 572501
- North Devon Council Planning**
- Wednesday 10am-12noon 01769 572501
- North Devon Voluntary Service drop-in**
- Thursday 10am-12pm 01271 866300
- Open Gate** bereavement group
- 1st & 3rd Thursday 11am-1pm 01769 572476
- Plough and Share Credit Union**
- Thursday 10am-12noon 01837 658123
- South Molton Town Council**
- Monday-Friday 9am-4.30pm 01769 572501
- South Molton Volunteer Bureau**
- 1st Wednesday 2-4pm 01769 573167

COMMUNITY NEWS S Molton & District

Please get news, adverts and events for the **May edition** to us by **15th April**.

To advertise with us in the 24 parishes around S Molton, or to contribute, please write to us, or drop off messages, at the Amory Centre, 125 East St, S Molton EX36 3BU, email **moltonnews@hotmail.co.uk**, or call **01769 575528/572501**. Events can also be entered in the Diary at the Amory Centre. Thank you for your support!

TURNER FRAMES

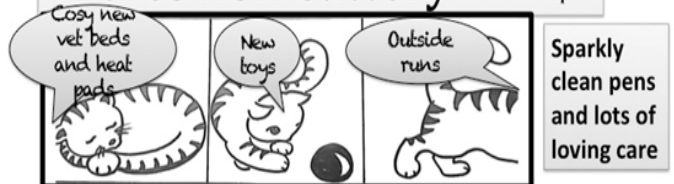
Peter Turner, friendly & personal bespoke picture framer

Mount Cutting-Framing-Box Framing-Glazing-Repairs

Call me for a free no obligation quote,
no job too big or too small
Paintings-Prints-Textiles
Memorabilia-Photographs-Certificates

Tel: 01769 581615 Mobile: 07802 256349

Bales Ash Cattery new ownership



Bales Ash Cattery, High Bickington, EX37 9BL
Come and take a look. 01769 560880/561063